



# Weasel Solar Farm

## PROJECT UPDATE

### Project receives Development Approval

**Central Highlands Council approved the Weasel Solar Farm (Development Application DA 2025/14) at its Council Meeting on Tuesday, 15 July 2025.**

The solar project has a potential capacity up to 250 MW located 9 kilometres north of Bothwell. Sightlines from Highland Lakes Road along the western extent of the site boundary are largely protected by existing vegetation and a crest parallel to the road.

The planning permit contains a range of conditions, as proposed in the Council Agenda, that can be viewed on Council's website or Council offices.

<https://centralhighlands.tas.gov.au/wp-content/uploads/Council-Agenda-July-2025.pdf>

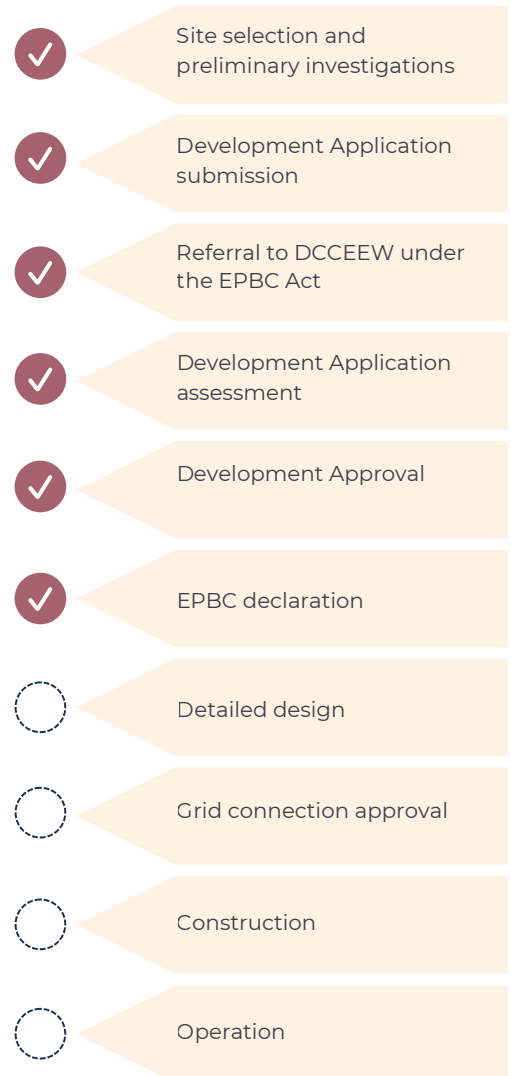


Image: Areas selected for the solar farm are relatively flat and hidden from public view.

## EPBC declaration

Weasel Solar Farm was referred under the *Environment Protection and Biodiversity Conservation Act 1999* (EPBC Act) to the Federal Minister of Environment. On 22 May 2025, the Project was determined to 'not be a Controlled Action', due to the avoidance of any significant impacts upon nationally significant environmental matters.

### Approvals process



# Next steps

## Construction

The Project team are now preparing for construction, with a focus on finalising detailed design, management plans and procurement.

This phase includes the preparation of management plans required under the Project's planning permit including for Fire, Traffic and Environmental Management.

In parallel, the team will commence engagement with local contractors and suppliers. Community and key stakeholder engagement will continue during this time, to ensure that neighbours and the broader community are kept informed about construction timing, traffic changes and employment opportunities.

Exact construction dates are not yet clear, however, it is expected to begin once all pre-construction conditions have been met and key project delivery partners have signed on.



Image: The solar farm will be constructed to enable the continued use of the land for grazing sheep on pastures underneath the solar panels, known as 'agrisolar.'

## Gamuda to co-develop Weasel and other renewable energy projects

Alternate Path and the Downie family have partnered with Gamuda, to co-develop and construct Weasel Solar Farm and Cellar Hill Wind Farm (if approved).

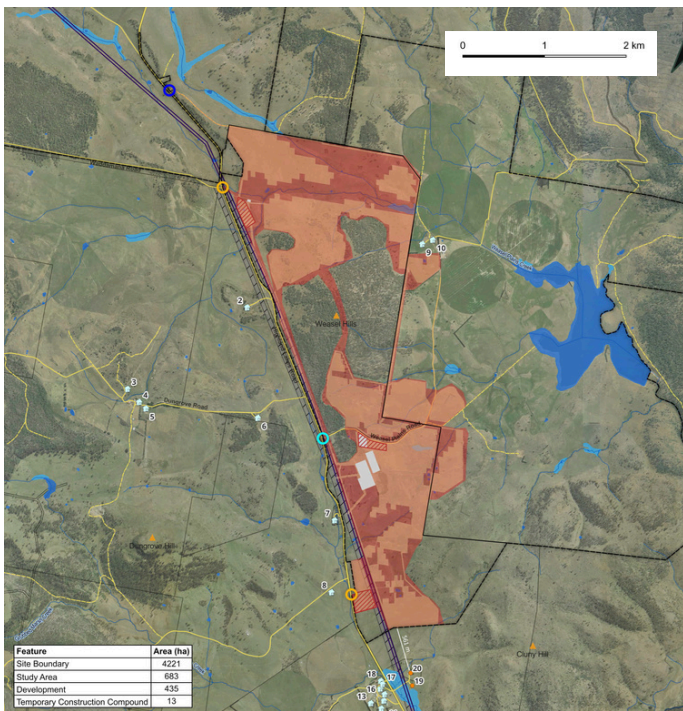
Gamuda is a global engineering, property and infrastructure company with an excellent track record of delivering world-class major projects. The company's core business focuses on infrastructure design, engineering, construction, operation and maintenance across rail, roads, bridges, tunnelling, water management, transmission and renewable energy.

Gamuda is part of the Gamuda Group of Companies. Collectively this group has operated in Australia for over a decade, employing a team of over 2,300+ people across six Australian states and delivering over 50 projects nationally.

Gamuda is committed to continue the landowner-led principles of the portfolio which will be delivered in partnership with the Downie Family and Alternate Path.

Whilst Gamuda will bring important technical and engineering skills to the project team, from the outside, the project will continue as in a business-as-usual manner, including its strong commitment to engagement and community benefit sharing.

For more information, please visit: <https://gamuda.com.au/2025/07/tasmanian-landowners-gamuda-combine-to-develop-clean-energy-portfolio/news/>



**cogency**  
Design Layout Plan  
2212 - Weasel Solar Farm

**Proposed Features**

- Site Boundary
- Study Area
- Development Area
- Temporary Construction Compound
- BESS and Network Connection Components

**Existing Features**

- 220 kV Transmission line
- Title Boundary
- Waterways
- Roads
- Calastrie
- Water Body
- Wetland

**Access Points**

- Primary
- Secondary / emergency
- Tertiary / evacuation

**Other Symbols:**

- Hits
- Dwellings
- Involved
- Not Involved

Contact us



[www.weaselsolarfarm.com.au](http://www.weaselsolarfarm.com.au)



0452 593 428



[consultation@cogencyaustralia.com.au](mailto:consultation@cogencyaustralia.com.au)

